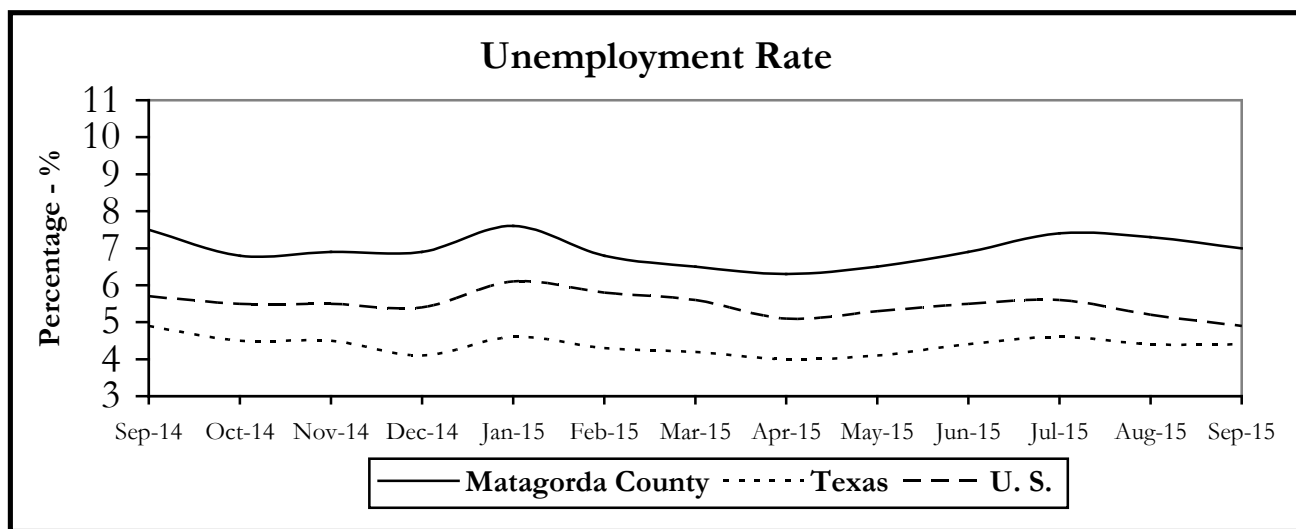


2nd Quarter 2015 Data

The rate of unemployment in Matagorda County unchanged in December at 7.3 percent but was four-tenths of a percentage point higher than one year earlier. The unemployment rate was higher than the state's 4.2 percent rate and the nation's 4.8 percent rate. Total covered employment in the county was up 288 jobs or 2.6 percent over second quarter 2015. Second quarter increases were driven by gains in Construction, up 82 jobs or 18.6 percent, and Leisure & Hospitality, up 112 jobs or 10.3 percent. The county reported an increase of 875 jobs over the year with the pace of job growth rising from 5.6 percent in first quarter 2015 to 8.5 percent. Job gains were widespread in the private sector with strongest increases in Construction, Manufacturing, Trade Transportation & Utilities, and Professional & Business Services. See page 2 for detailed data.

	DEC 2015	NOV 2015	DEC 2014
Civilian Labor Force	17,140	16,836	16,480
Total Employment	15,897	15,601	15,344
Unemployed	1,243	1,235	1,136
Unemployment Rate	7.3%	7.3%	6.9%
Comparative Actual Rates			
Texas	4.2%	4.5%	4.1%
U.S.	4.8%	4.8%	5.4%



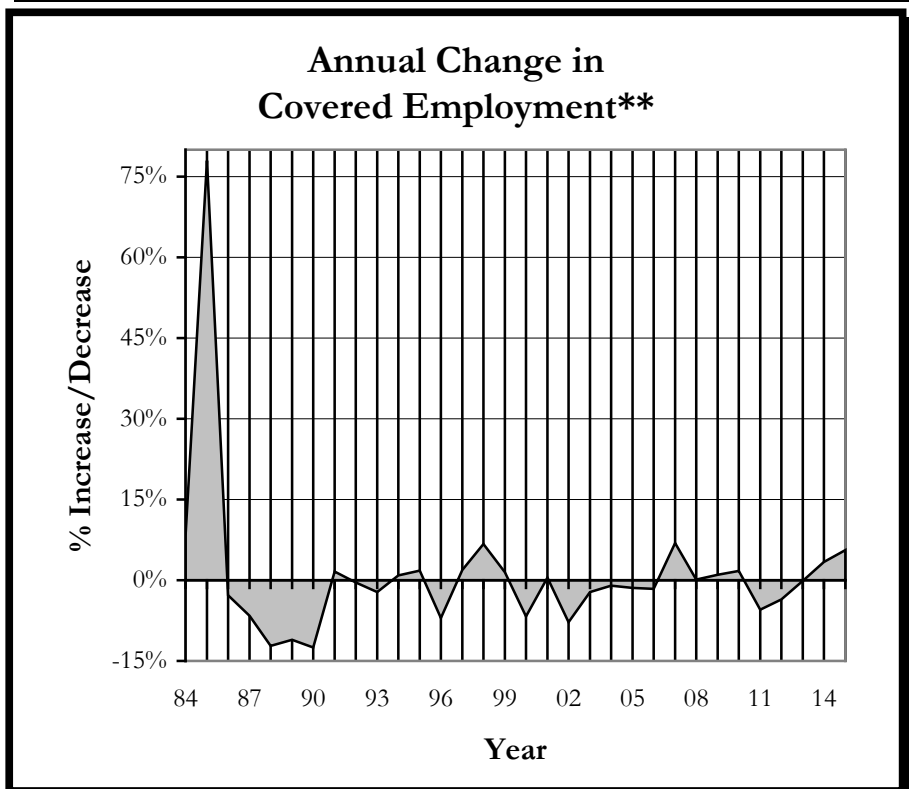
Estimates reflect actual (not seasonal adjusted) data. Civilian Labor Force includes wage and salary workers, self-employed, unpaid family, domestics in private households, agricultural workers, workers involved in labor disputes and the unemployed, all by place of residence. Source: Texas Workforce Commission in cooperation with the U.S. Department of Labor, Bureau of Labor Statistics. All data is subject to revision.

COVERED EMPLOYMENT	Number of Jobs			Quarter Chg.		Annual Chg		Avg Wkly Wage*
	2ND QTR	1ST QTR	2ND QTR	Actual	%	Actual	%	
	2015	2015	2014					
Total Employment	11,221	10,933	10,346	288	2.6%	875	8.5%	\$839
Natural Resources & Mining	855	836	878	19	2.3%	-23	-2.6%	\$827
Construction	524	442	242	82	18.6%	282	116.5%	\$1,392
Manufacturing	459	487	308	-28	-5.7%	151	49.0%	\$1,212
Trade, Transportation, & Utilities	3,101	3,109	2,909	-8	-0.3%	192	6.6%	\$1,886
Information	56	58	67	-2	-3.4%	-11	-16.4%	\$620
Financial Activities	331	332	342	-1	-0.3%	-11	-3.2%	\$1,062
Professional & Business Services	783	748	586	35	4.7%	197	33.6%	\$1,017
Education & Health Services	1,052	1,017	1,078	35	3.4%	-26	-2.4%	\$637
Leisure & Hospitality	1,197	1,085	1,127	112	10.3%	70	6.2%	\$286
Other Services	423	397	410	26	6.5%	13	3.2%	\$753
Nonclassifiable	0	3	0	-3	0.0%	0	0.0%	na
Public Administration	2,440	2,419	2,397	21	0.9%	43	1.8%	\$751
Federal Government	81	80	75	1	1.3%	6	8.0%	\$1,124
State Government	95	96	100	-1	-1.0%	-5	-5.0%	\$839
Local Government	2,264	2,243	2,222	21	0.9%	42	1.9%	\$734

*Wages compiled from 1st quarter 2015 contribution and wage reports submitted to the Texas Workforce Commission by employers subject to the Texas Unemployment Compensation Act. Data source: the Texas Workforce Commission, Labor Market and Career Information Department in cooperation with the Bureau of Labor Statistics, U.S. Department of Labor.

Matagorda County 1983-2015 Covered Employment**

YEAR	JOBS	+ / (-)	% +/-
83	9,889		
84	10,696	807	8.2%
85	19,040	8,344	78.0%
86	18,506	(534)	-2.8%
87	17,283	(1,223)	-6.6%
88	15,183	(2,100)	-12.2%
89	13,499	(1,684)	-11.1%
90	11,806	(1,693)	-12.5%
91	12,000	194	1.6%
92	11,952	(48)	-0.4%
93	11,692	(260)	-2.2%
94	11,798	106	0.9%
95	12,008	210	1.8%
96	11,172	(836)	-7.0%
97	11,384	212	1.9%
98	12,151	767	6.7%
99	12,332	181	1.5%
00	11,500	(832)	-6.7%
01	11,557	57	0.5%
02	10,652	(905)	-7.8%
03	10,420	(232)	-2.2%
04	10,318	(102)	-1.0%
05	10,170	(148)	-1.4%
06	10,007	(163)	-1.6%
07	10,696	689	6.9%
08	10,709	13	0.1%
09	10,815	106	1.0%
10	11,004	189	1.7%
11	10,404	(600)	-5.5%
12	10,026	(378)	-3.6%
13	10,014	(12)	-0.1%
14	10,356	342	3.4%
15	10,933	577	5.6%



**Data Compiled from 1st quarter contribution and wage reports submitted to the Texas Workforce Commission by employers subject to the Texas Unemployment Compensation Act. For more information on your particular industry, please call 832/681-2535. Data source: the Texas Workforce Commission, Labor Market and Career Information Department in cooperation with the Bureau of Labor Statistics, U.S. Department of Labor.

Gulf Coast** 2014 Wages Released April 2015*

Std. Occ Code	Occupation	Average Wage	Employment
13-2011	Accountants & Auditors	39.83	33,260
49-3023	Automotive Service Technicians and Mechanics	19.35	10,710
43-3031	Bookkeepers, Acctg and Auditing Clerks	19.09	30,490
49-3031	Bus and Truck Mechanics and Diesel Engine Specialists	21.58	6,180
53-3022	Bus Drivers, School	12.91	8,360
47-2031	Carpenters	16.68	10,330
41-2011	Cashiers	9.70	61,820
17-2051	Civil Engineer	53.87	10,990
15-1121	Computer Systems Analyst	49.40	15,280
47-2061	Construction Laborers	14.44	33,880
35-2012	Cooks, Institution and Cafeteria	11.18	6,200
35-2014	Cooks, Restaurant	10.61	20,990
43-4051	Customer Service Representatives	15.87	54,730
43-9021	Data Entry Keyers	13.97	5,570
47-2111	Electricians	23.52	17,000
43-6011	Executive Secretaries and Administrative Assistants	27.10	15,520
47-1011	First-Line Supervisors/Managers of Construction Trades and Extraction Workers	32.55	19,240
43-1011	First-Line Supervisors/Managers of Office and Administrative Support Workers	28.37	28,910
41-1011	First-Line Supervisors/Managers of Retail Sales Workers	22.15	24,260
35-2021	Food Preparation Workers	8.79	70,340
11-9051	Food Service Managers	26.70	3,340
11-1021	General and Operations Managers	66.27	48,080
49-9041	Industrial Machinery Mechanics	25.57	11,450
53-7051	Industrial Truck and Tractor Operator	14.87	13,690
37-2011	Janitors and Cleaners, Except Maids and Housekeeping Cleaners	10.06	48,040
53-7062	Laborers and Freight Stock, and Material Movers, Hand	13.31	52,500
29-2061	Licensed Practical and Licensed Vocational Nurses	23.30	14,080
11-9081	Lodging Managers	22.59	610
51-4041	Machinists	20.53	13,420
11-2021	Marketing Managers	73.14	2,820
31-1014	Nursing Aides, Orderlies, and Attendants	12.17	17,040
43-9061	Office Clerks, General	16.41	83,980
29-1051	Pharmacists	55.44	4,740
47-2152	Plumbers, Pipefitters, and Steamfitters	23.01	11,750
33-3051	Police and Sheriff's Patrol Officers	26.52	14,050
13-1023	Purchasing Agents, Except Wholesale, Retail, and Farm Products	34.20	8,510
43-4171	Receptionists and Information Clerks	12.93	14,550
29-1141	Registered Nurses	36.19	44,310
41-2031	Retail Salespersons	12.64	89,500
41-4011	Sales Representatives, Wholesale and Manufacturing, Technical and Scientific Products	45.97	12,780
43-6014	Secretaries, Except Legal, Medical, and Executive	16.36	41,970
33-9032	Security Guards	12.16	26,390
43-5071	Shipping, Receiving, and Traffic Clerks	14.65	19,210
43-5081	Stock Clerks and Order Fillers	12.56	37,020
53-3032	Truck Drivers, Heavy and Tractor-Trailer	22.84	37,840
53-3033	Truck Drivers, Light or Delivery Services	16.27	15,730
51-4121	Welders, Cutters, Solderers, and Brazers	20.77	18,000

*Data compiled by the Texas Workforce Commission, LMCI Dept. in cooperation with the Bureau of Labor Statistics as part of the Occupational Employment Survey. Employment is the estimate of employment based upon the sample, not the sample employment. Wages for the OES survey are straight-time, gross pay, exclusive of premium pay. Base rate, cost-of-living allowances, guaranteed pay, hazardous-duty pay, incentive pay including commissions and production bonuses, tips, and on-call pay are included. Excluded are back pay, jury duty pay, overtime pay, severance pay, shift differentials, nonproduction bonuses, employer cost of supplementary benefits, and tuition reimbursements. **The Gulf Coast Region is defined as Austin, Brazoria, Chambers, Colorado, Fort Bend, Galveston, Harris, Liberty, Matagorda, Montgomery, Walker, Waller, and Wharton Counties.